

ENVIRONMENTAL PLUS, INC.



STATE APPROVED LAND FARM & ENVIRONMENTAL SERVICES

ENVIRONMENTAL PLUS, INC.

2100 Ave O • P.O. 1558, Eunice, NM 88231

505-394-3481

Fax 505-394-2601

HISTORY

In 1993, Environmental Plus, Inc. (EPI) petitioned the State of New Mexico, Energy Minerals and Natural Resources Department, Oil Conservation Division for authorization to construct and operate a landfarm for disposal and remediation of "non-hazardous" hydrocarbon contaminated soil generated by the oil and gas industry.

During 1998/99, desiring to provide the oil and gas industry with the full spectrum of environmental capabilities, EPI expanded services to include:

- Hauling
- Excavation
- Surface soil and ground water investigation capabilities
- Monitor Well installation to 75 feet
- Technical consulting and reporting capabilities.



After a lengthy application and review process during the summer of 1999, EPI received certification by the Rio Grande Minority Purchasing Council, Inc. as a "Woman-Owned Business." Ms. Sherry Miller is the corporation president.

SAFETY & QUALITY COMMITMENT

EPI is committed to providing *Quality Service* to its clients by ensuring deployment of dependable and sound equipment and qualified, trained, and experienced personnel. It is EPI's philosophy that *Occupational Workplace Safety* is requisite to *Quality Service* and is therefore the highest policy priority. The "EPI Employee Safety Program" provides each employee with an orientation to workplace hazards, training to manage them appropriately, and provides documentation of EPI's Safety Culture. EPI has designed the Safety Program to be compliant with OSHA and with client's Contractors Safety Programs.

EPI Emergency Response Rig

EPI maintains its trailer mounted 500 gallon application unit for deployment during emergencies where *Micro-Blaze Spill Control* is needed and is also used to apply *Micro-Blaze Spill Control* "in-situ" or to constructed "bio-cells."

LANDFARM SERVICES

Non-hazardous petroleum hydrocarbon contaminated soils generated by the oil and gas industry and related entities are received into the landfarm under a "chain-of-custody" form and procedure, as well as, a "Certificate of Waste Status." The waste generator declares that the waste is exempt or non-exempt and certifies waste characterization through analysis or knowledge of process.

Waste Acceptance Criteria

Rocky soil must be conditioned, i.e., rock and soil separated, before the soil is placed in the landfarm. Soils contaminated with Chloride above 10,000 ppm will interfere with the natural attenuation processes and are not accepted. Liquid wastes are not accepted.

Maintenance

Each cell is disked every 14 days. This aerates the soil, promotes volatilization of BTEX and other volatile compounds, and encourages natural attenuation. Historically, soils attenuate to below regulatory limits, i.e., 100 ppm TPH, within one year.

Regulatory Compliance

To monitor the treatment zone underlying each cell, routine compliance samples are analyzed quarterly for Benzene, Toluene, Ethyl Benzene, and mp&o Xylene (BTEX) and for Total Petroleum Hydrocarbon (TPH) and annually for EPA Metals using the Toxicity Characteristic Leaching Procedure (TCLP). The results are reported to the State of New Mexico as required by the permit.



DRILLING & CORING

EPI uses the 25-SCT Drilling rig manufactured by Giddings Machine to conduct subsurface investigations and install monitor wells to 75'. Continuous and Hollow Stem augers to 6" diameter will accommodate most investigations or well installation circumstances. Detailed borelogs are provided.



TECHNICAL SERVICES

These services include project plan development, site assessments, risk assessments, and reporting. EPI also maintains a good relationship with the New Mexico Oil Conservation Division.

Field Analytical

EPI provides the following field tests:

- Chloride
- TPH, 418.1
- VOC Headspace with a calibrated Photoionization Detector
- pH

EQUIPMENT & PERSONNEL

EPI maintains a fleet of excavation, loading, and hauling equipment and a trained experienced operational staff. EPI is capable of accomplishing the goals of the largest and most complex projects.

SOIL SHREDDING & CONDITIONING

The ROYER 66 Shredder separates rock from landfarmable soil and can process up to 800 cubic yards of material per day. The shredding and conditioning process also promotes volatilization of regulated Volatile Organic Compounds such as BTEX.



Hydro-Excavation redefines safety expectations!

HydroTech Services, LLC specializes in Hydrovac Excavation Services. Our trucks are fully self-contained and work as three separate units: a water truck, a pressure truck and a vacuum truck.



HYDROTECH SERVICES, INC.

2100 Ave. O • P.O. 1558, Eunice, NM 88231

505-394-0201

Fax 505-394-2601

Hydrovac Excavation is a process that utilizes pressurized water to remove soil cover and a vacuum to remove the soil debris. The water is pressurized at a level of 2800 psi and is delivered through a specialized hand held wand to penetrate the soil. The resulting sludge, soil and some waste, is then vacuumed into the debris hose by the powerful vacuum system and contained in the debris tank on the truck.

Hydrovac Excavation is useful for many different jobs and applications including Pipeline Crossings, Piling Holes, Culvert Cleaning, Drainage Piping, Light Pole Bases, Substations, Water Trap, Petroleum Plants, In Plant Trenching,

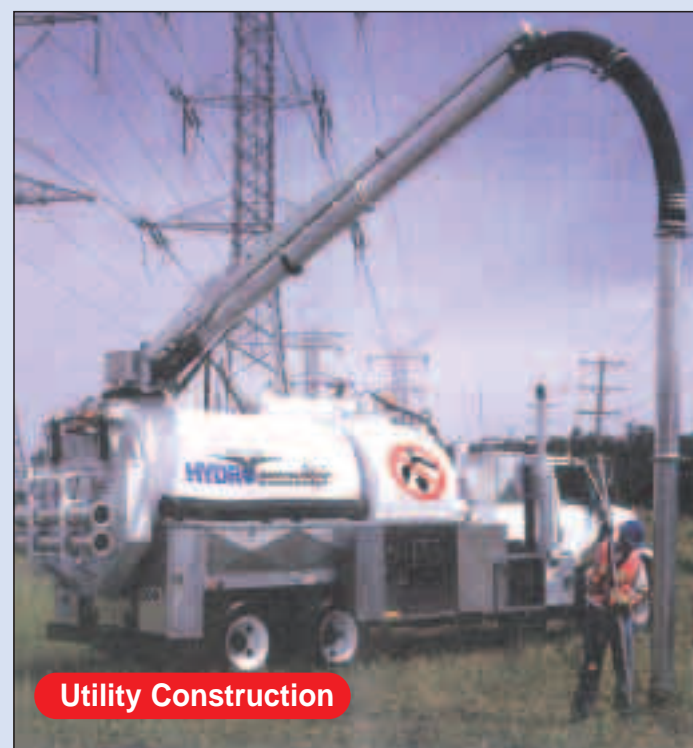
Underground Repairs, Foundation Repair, Deck Piers, Pot Holing, Fence Holes and Trees Planting.

The Hydro Excavation method reduces many difficulties and dangers that become possible with the exposure of underground pipelines and utilities. Utilizing this method allows a visual observation of existing buried underground utilities so that they may be avoided when digging into the ground.

Another benefit of utilizing the Hydro Excavation method is the cost benefit to contractors and municipalities. For example, overall job costs will be greatly reduced due to the elimination of costs for re-landscaping large areas that occurs with traditional excavation.

For more information on how HydroTech Services, LLC can assist you with your excavation needs, please call our office at

505-394-0201



Utility Construction



Low Water Usage



Live Gas Lines Exposed



Minimal Disruption to Landscape



Heavy Clay and Rock